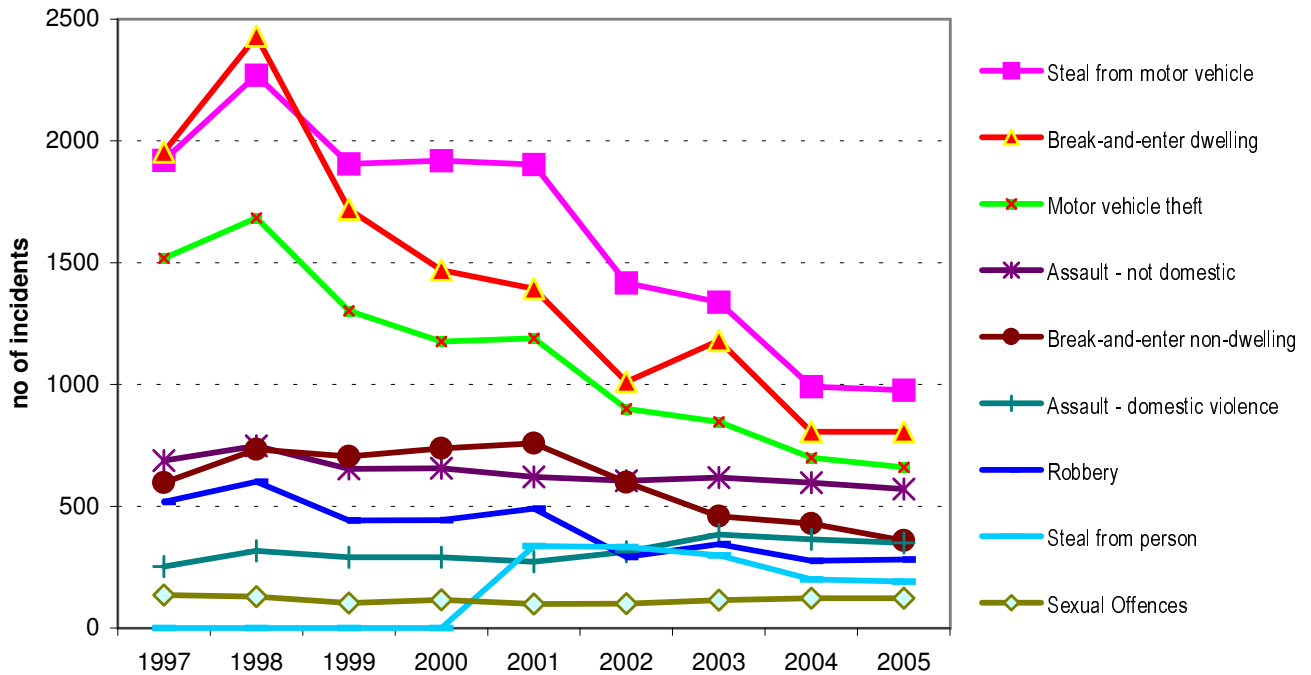
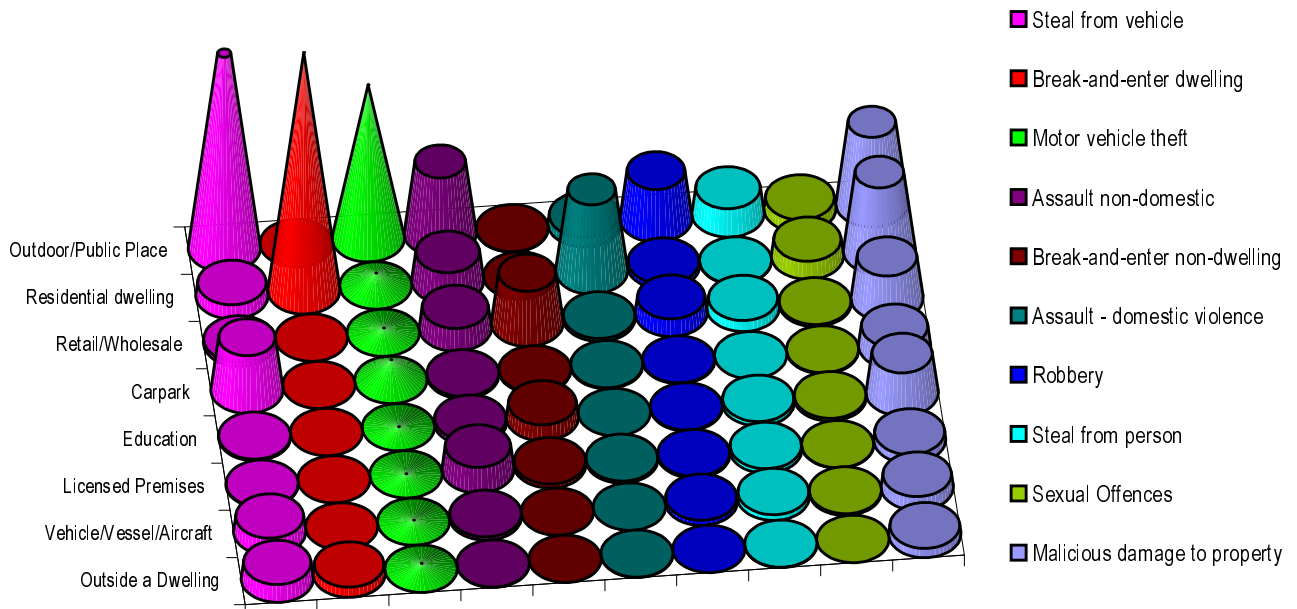


Marrickville Crime Profile 2005

Longer-term crime trends in Marrickville



Common locations of major crimes in Marrickville, 2005



This report presents NSW Reported Crime Statistics from the NSW Bureau of Crime Statistics and Research (BOCSAR) web site, www.lawlink.nsw.gov.au/bocsar. It was prepared for Marrickville Council by The Public Practice Pty Ltd, www.publicpractice.net

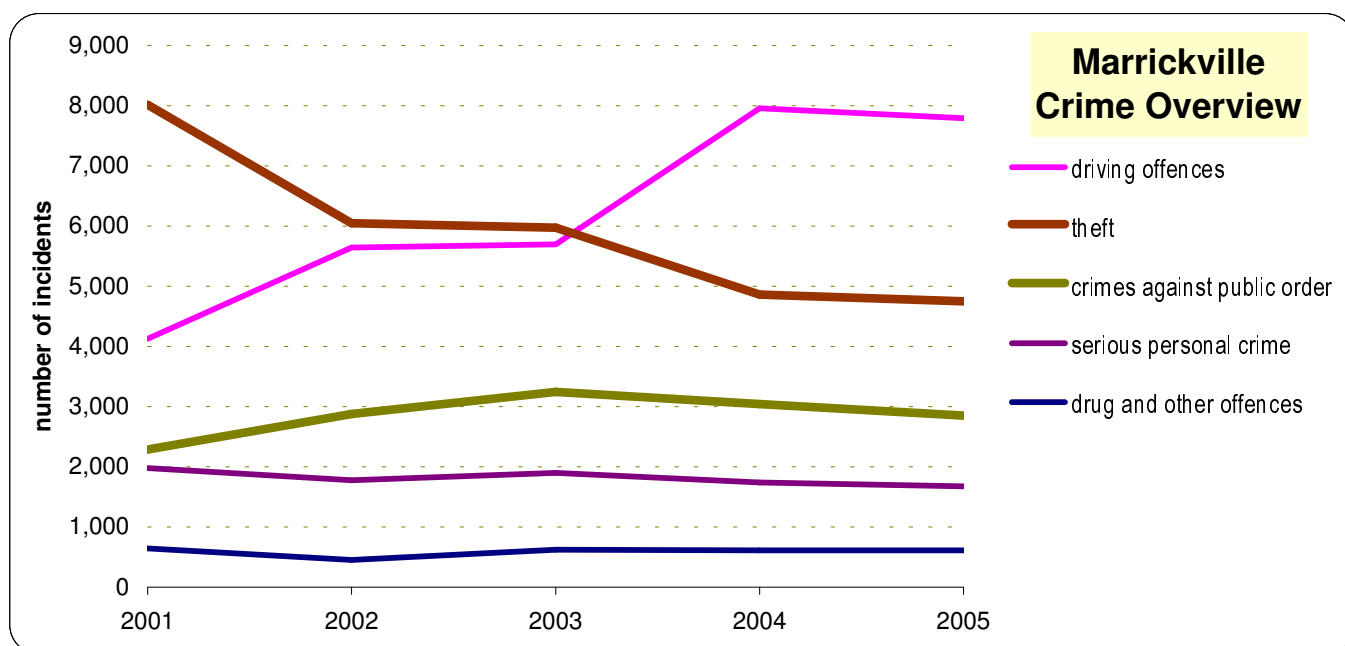
Marrickville Crime Profile 2005

During 2005, there were 17,684 offences committed in Marrickville, an overall rate of 235 per 1,000 residents. In order of prevalence, the major crime groups were driving offences with 7,793 offences, theft with 4,752, crimes against public order with 2,852 and serious personal crime with 1,677 offences. Marrickville's overall rate for crime incidents, 235 per 1000 residents, exceeds Sydney's average of 205 and NSW's average of 217 per 1000.

In NSW over 2004–2005, the trend in most major crimes was downwards – break-and-enter dropped by 11%, motor vehicle theft by 12.4%, steal from motor vehicle by 9%. Most other crime categories showed an uneven trend, fluctuating from year to year, with no statistically significant upward or downward trend. The only upward trend in NSW identified as significant by BOCSAR was malicious damage to property, which includes graffiti, and was up by 8.1%.

In Marrickville, the rate of theft, serious personal crimes, drug offences and crimes against public order were higher than the Sydney rate. However, long term trends from 1997 show major crime in Marrickville trending downward over a ten year period. Marrickville was ranked 2nd LGA in NSW for robbery offences.

There appears to be a rising trend in driving offences in Marrickville, however this is due to a change in 2003 in the way driving offences are recorded, from recorded incidents to legal actions commenced by police.



Crime Overview Marrickville	Recorded Criminal Incidents					2005 rate /1000			trend 01-05	
	2001	2002	2003	2004	2005	M'ville	Sydney	ratio	M'ville	Sydney
driving offences	4,130	5,642	5,696	7,958	7,793	104	109	5% less	uneven	up 11% pa
theft	8,016	6,047	5,971	4,863	4,752	63	43	33% more	dn 12% pa	dn 12% pa
crimes against public order	2,287	2,879	3,246	3,040	2,852	38	32	16% more	uneven	up 7% pa
serious personal crime	1,977	1,775	1,899	1,740	1,677	22	16	29% more	dn 4% pa	dn 3% pa
drug and other offences	645	453	624	611	610	8	5	35% more	up 1% pa	uneven
total	17,055	16,796	17,436	18,212	17,684	235	205	13% more	uneven	uneven
Population	76,743	76,515	75,937	75,752	75,114				dn 1% pa	up 1% pa
rate per 1,000 people	222	220	230	240	235	Annual trend in Marrickville rate			uneven	
rate per 1,000 people, Sydney	198	191	194	210	205	Annual trend in Sydney rate			uneven	
rate per 1,000 people, NSW	206	205	211	223	217	Annual trend in NSW rate			uneven	

Serious personal crime

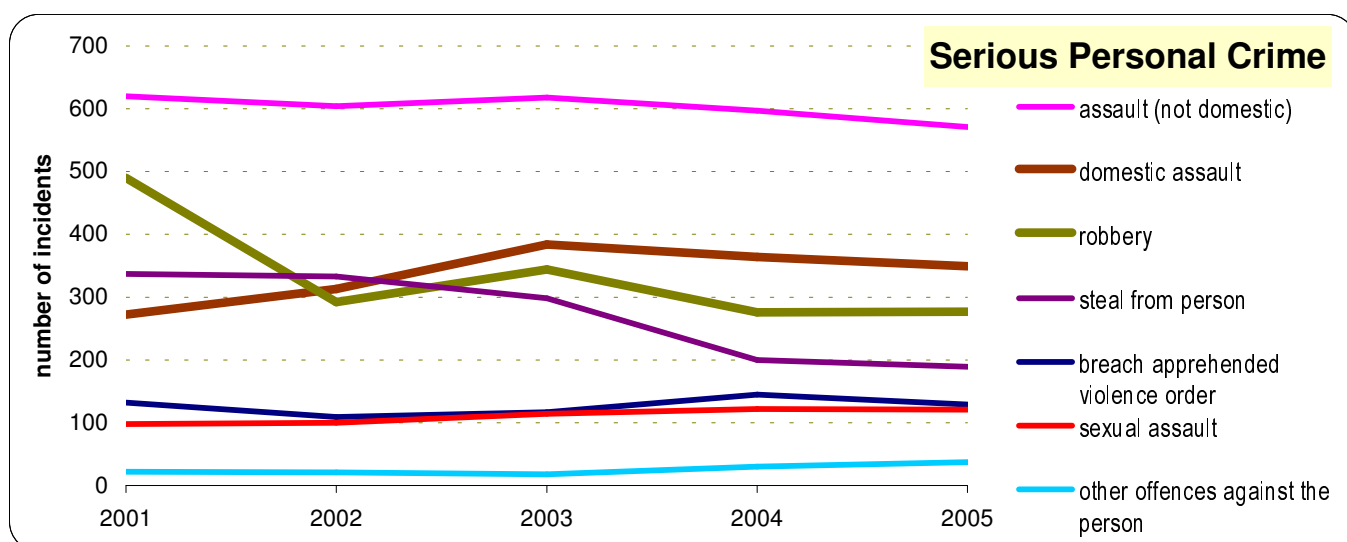
Serious personal crimes grouped here include assault, domestic assault, sexual assault, robbery, crimes causing death and other crimes against the person. Personal crimes are usually under-reported unlike property crimes which must be reported for insurance claims. The NSW Bureau of Crime Statistics and Research reports that only 36% of alleged assault offences were reported in NSW in 2004, compared to 91% of motor vehicle thefts and 67% of household break-and-enters.

The rate of crimes against the person was higher in Marrickville than in Sydney across all personal crime offences, most notably for robbery, where Marrickville ranked 2nd highest in NSW in 2005. Marrickville also ranked 11th for steal from person, although this offence dropped by 13% between 2001 and 2005, more than Sydney's drop of 6%. Robbery involves a threat against a person, with or without a weapon, while steal from person involves theft of property without a threat.

In 2005, 571 incidents of non-domestic assault and 449 of domestic assault were reported in Marrickville. The rates of both non-domestic assault (7.6 per 1000) and domestic assault (4.6 per 1000) were higher than in Sydney (6.0 and 3.3 per 1000 respectively). In 2005, Marrickville ranked 49th in NSW for domestic assault and 51st for non-domestic assault. Assault dropped somewhat over 2001–2005 but the long term pattern is of fluctuation in the same range.

Sexual assault was less frequent with 121 reported incidents in 2005 – Marrickville ranked 70th in the state for sexual assault. The incidence of robbery (277 incidents in 2005) and steal from person (189 incidents) have both fallen significantly over recent years.

Around 100-150 breaches of apprehended violence orders are reported each year in Marrickville. This offence can have significant personal impact, causing potential victims to live in fear. Crimes causing death (eg murder, driving causing death) occur in very small numbers.



Serious personal crime, Marrickville	Recorded Criminal Incidents					rate / 1000		rank in 2005	annual change 01-05	
	2001	2002	2003	2004	2005	M'ville	Sydney		M'ville	Sydney
assault (not domestic)	620	604	618	597	571	7.6	6.0	51	dn 2%	uneven
domestic assault	272	313	384	364	349	4.6	3.3	49	uneven	uneven
robbery	490	292	344	276	277	3.7	1.6	2	uneven	uneven
steal from person	337	333	298	200	189	2.5	2.4	11	dn 13%	dn 6%
breach apprehended violence order	132	109	117	145	129	1.7	1.2	--	uneven	uneven
sexual assault	98	100	114	122	121	1.6	1.1	70	uneven	uneven
other offences against the person	22	21	18	30	37	0.5	0.3	--	uneven	up 5%
crimes causing death	6	3	6	6	4	0.1	0.0	--	up 4%	dn 7%
total	1977	1775	1899	1740	1677	0.5	1.6		dn 4%	dn 3%
rate per 1,000 people	26	23	25	23	22	Annual trend in Marrickville rate				dn 3%
rate per 1,000 people, Sydney	18	19	18	16	16	Annual trend in Sydney rate				dn 4%
rate per 1,000 people, NSW	19	19	19	17	17	Annual trend in NSW rate				dn 2%

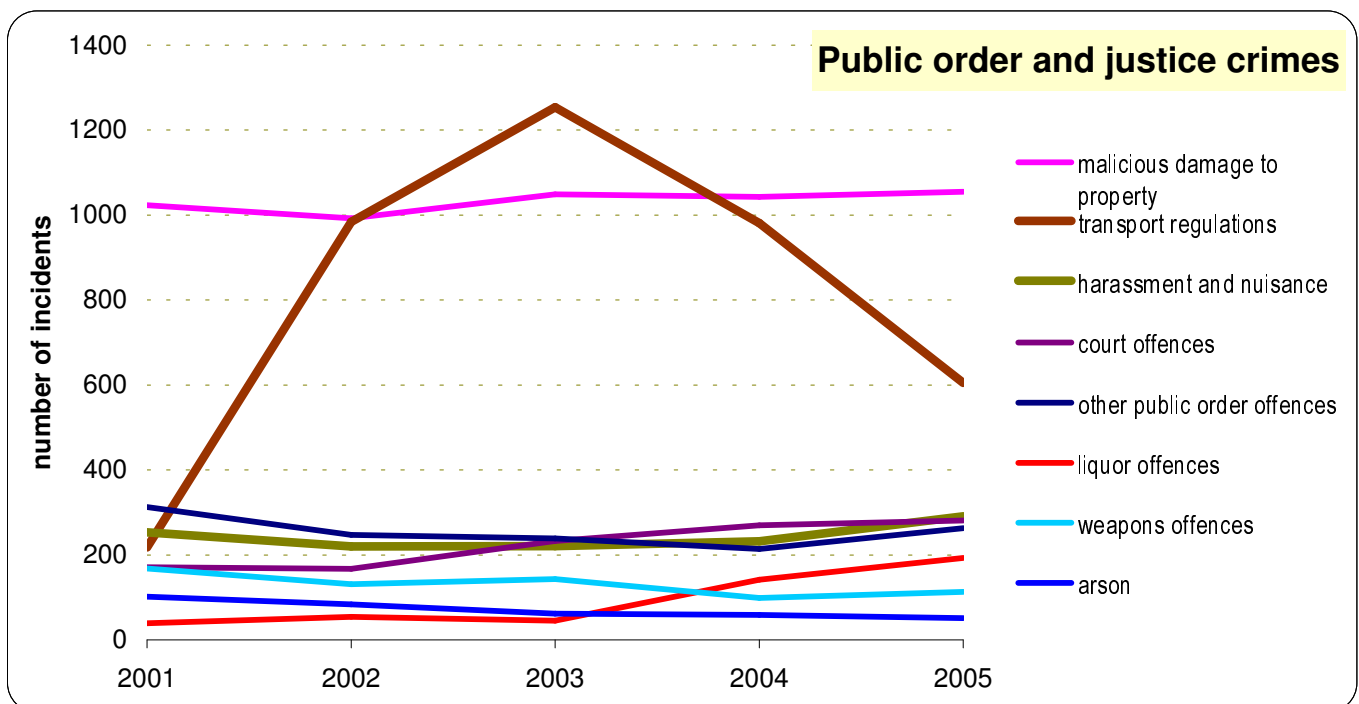
The rank is out of 154 Local Government Areas; not available for all crime categories.

Public Order and Justice Crimes

This grouping includes crimes against justice procedures (such as breach bail conditions and resisting arrest) and a variety of public order offences, such as liquor offences, pornography, prostitution, disorderly conduct, trespass, offensive conduct and offensive language. These offences have been rising across NSW and Sydney, as well as in Marrickville.

Malicious damage to property is included here as it is often associated with breaches of public order, and may have an impact on community perceptions of safety in public spaces. Graffiti is classified within malicious damage, along with damage to public places (eg shrines and monuments), egg throwing and breaking windows (often in association with break-and-enter offences).

Malicious damage is a prevalent offence, showing no significant trend over the past 5 years in Marrickville. Most malicious damage occurs outdoors or in public places, followed by residential property, then retail and educational premises.



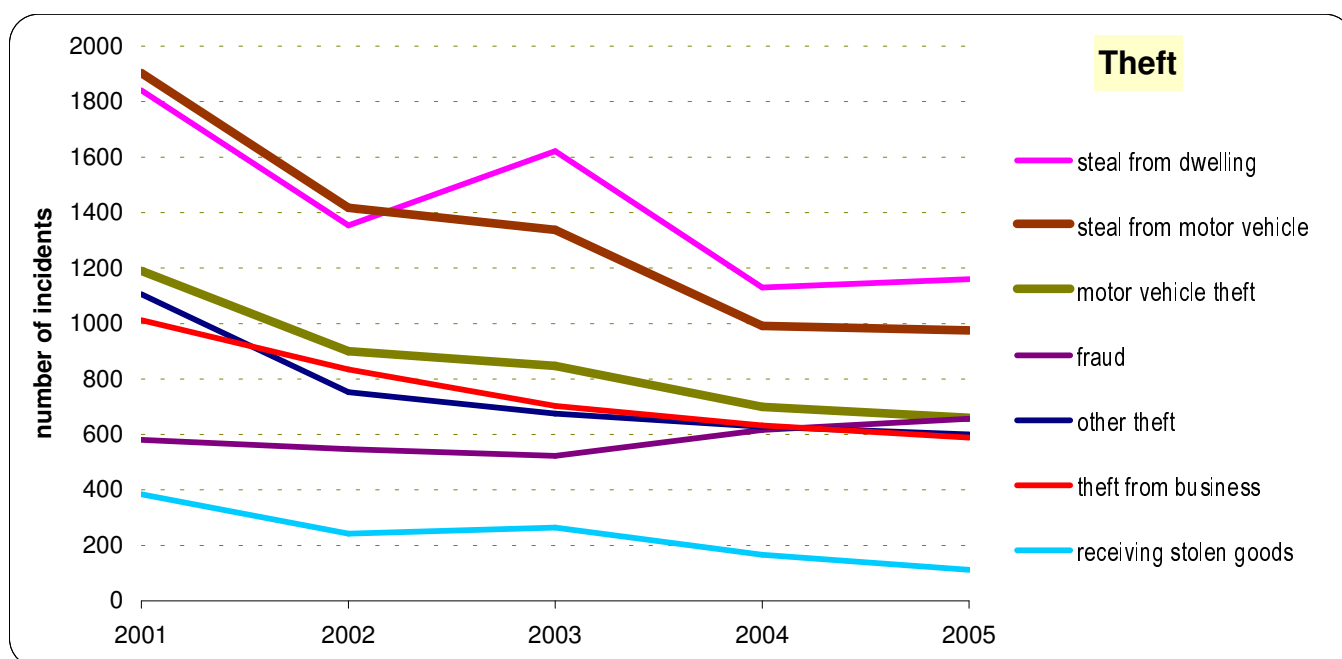
Public Order Marrickville	Recorded Criminal Incidents					rate / 1000		rank 2005	annual change 01-05	
	2001	2002	2003	2004	2005	M'ville	Sydney		M'ville	Sydney
malicious damage to property	1023	992	1049	1043	1055	14.0	13.4	--	uneven	uneven
transport regulations	218	984	1254	981	605	8.1	7.2	--	uneven	uneven
harassment and nuisance	253	220	221	232	291	3.9	3.1	--	up 4%	up 7%
court offences	171	167	233	270	281	3.7	1.7	--	up 14%	up 3%
other public order offences	313	247	239	214	263		3.1	--	uneven	uneven
liquor offences	39	54	45	142	193	2.6	1.4	--	up 68%	uneven
weapons offences	168	131	143	99	113	1.5	1.1	--	uneven	uneven
arson	102	84	62	59	51	0.7	1.0	--	dn 16%	uneven
total	2287	2879	3246	3040	2852	38.0	31.9		uneven	up 7%
rate per 1,000 people	30	38	43	40	38	Annual trend in Marrickville rate				up 7%
rate per 1,000 people, Sydney	26	28	32	32	32	Annual trend in Sydney rate				up 6%
rate per 1,000 people, NSW	28	31	34	33	34	Annual trend in NSW rate				up 5%

Theft

Theft in Marrickville has been dropping since 1998, following the NSW trend. Break-and-enter dwelling was the most frequent offence with 1160 incidents in 2005, a rate of 15/1000 people, higher than Sydney's rate of 10/1000. Marrickville ranked 18th in NSW in 2005 for break-and-enter dwelling. Over the 2001–2005 period, theft offences overall dropped by 12%, compared to Sydney's drop of 41%.

Motor vehicle theft and theft from motor vehicles are the next most prevalent major crimes in Marrickville, with 660 vehicles stolen and 975 incidents of theft from motor vehicles in 2005. In 2005, Marrickville ranked 4th of all LGAs in NSW for motor vehicle theft and 6th for stealing from motor vehicle, with a rate of 9/1000 and 13/1000 people respectively. However, these crimes were both trending down over 2001–2005, with motor vehicle theft down by 13% and steal from motor vehicle down by 15%. Sydney's rate shows similar falls in the rate of vehicle offences. The rates of these offences has dropped continuously since 1997, when there were 1,518 motor vehicle thefts and 1,921 incidents of stealing from motor vehicle in Marrickville.

The trend for theft from retail and business was down by 13% over 2001–2005. There were 588 offences recorded in 2005, down significantly from 1012 in 2001. This grouping includes break-and-enter (non-dwelling) offences, for which Marrickville ranked 49th in NSW with 359 offences in 2005. There were 657 fraud incidents in Marrickville in 2005, and the rate was 9/1000 people. This was higher than in Sydney overall, where the rate for fraud was 6/1000 people.



Theft Marrickville	Recorded Criminal Incidents					rate / 1000		rank 2005	annual change 01-05	
	2001	2002	2003	2004	2005	M'ville	Sydney		M'ville	Sydney
steal from dwelling	1841	1354	1621	1130	1160	15	10	16	uneven	dn 11%
steal from motor vehicle	1903	1417	1338	991	975	13	8	6	dn 15%	dn 12%
motor vehicle theft	1190	900	847	699	660	9	5	4	dn 13%	dn 14%
fraud	580	547	523	616	657	9	6	--	uneven	dn 15%
other theft	1106	753	675	628	600	8	7	--	dn 13%	up 1%
theft from business	1012	834	703	633	588	8	6	49	dn 13%	dn 15%
receiving stolen goods	384	242	264	166	112	1	1	--	dn 24%	dn 12%
total	8016	6047	5971	4863	4752	1	43		dn 12%	dn 41%
rate per 1,000 people	104	79	79	64	63	Annual trend in Marrickville rate			dn 11%	
rate per 1,000 people, Sydney	72	61	52	47	43	Annual trend in Sydney rate			dn 12%	
rate per 1,000 people, NSW	68	59	52	47	43	Annual trend in NSW rate			dn 11%	

The rank is out of 154 Local Government Areas; not available for all crime categories. Ranking for theft from dwellings and business is for break-and-enter only

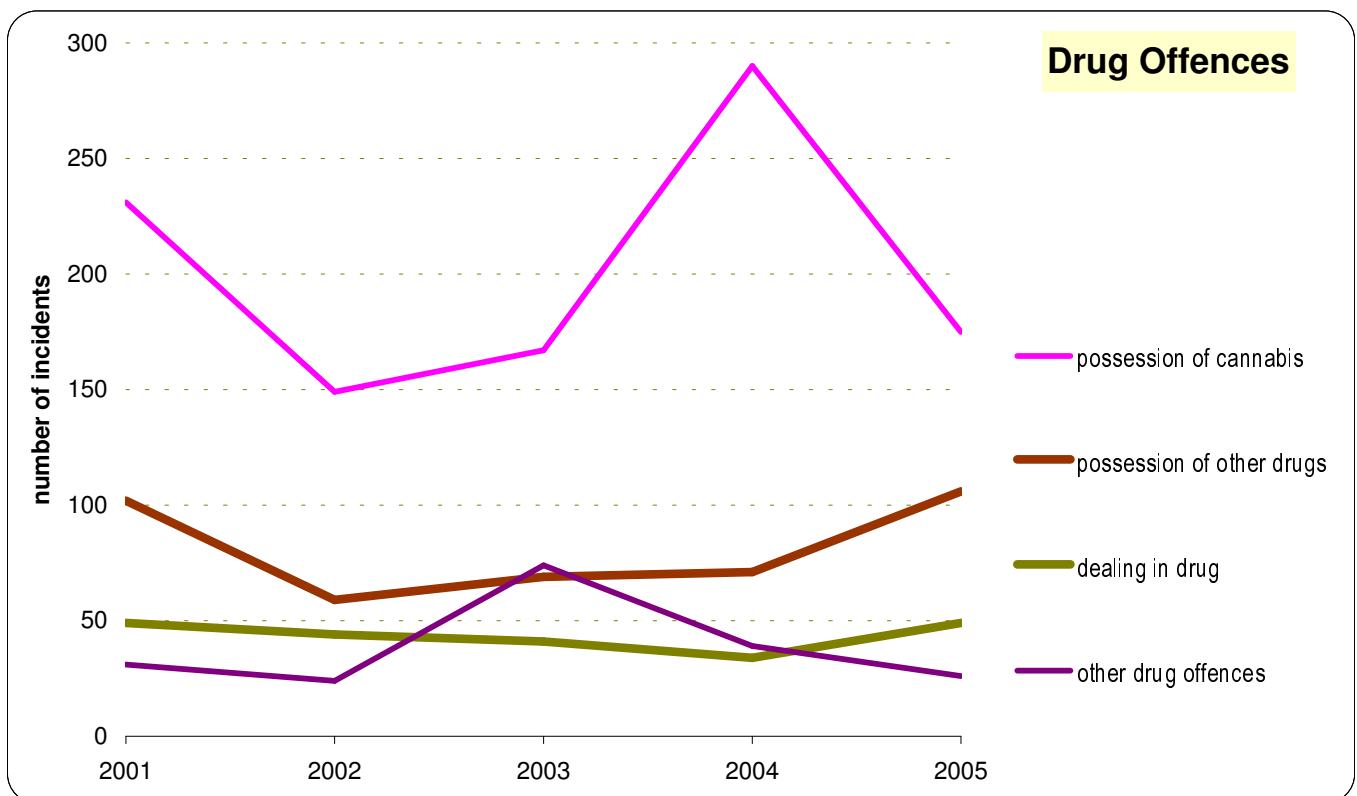
Drug offences

Marrickville has a somewhat higher rate of drug related offences than Sydney overall (4.7 per 1000 people compared to 3.2). The trend for possession of drugs other than cannabis and for other drug offences was upward over 2001–2005, by 7% and 26% respectively. The annual trend in the rate of drug offences in Marrickville has been stable, whilst it has fallen by 2% in Sydney and 5% in NSW, over the 2001–2005 period.

The offence of possession of cannabis has a fluctuating pattern, with 175 recorded incidents in 2005, down from 290 in 2004. The rate of 2.3 per 1000 people in 2005 was higher than 1.2 per 1000 in Sydney. The rate of offences for possession and use of drugs ranged from 33 per 1000 for amphetamines, 29 for narcotics, 10 for ecstasy and 30 per 1000 for 'other drugs'. There were 15 cultivating cannabis offences.

In 2005, Marrickville recorded 49 incidents of dealing or trafficking in drugs, including 18 for narcotics, 7 for cannabis and 3 each for cocaine and amphetamines. There were 26 other drug offences including forging a prescription, possessing drug utensil and other drug seizure offences.

High levels of drug crime are often linked to high levels of break-and-enter, robbery and stealing offences, as addicts may commit multiple small crimes to support daily drug habits. Apprehending of a repeat offender by police can make a substantial difference to local crime levels.



Drug offences Marrickville	Recorded Criminal Incidents					rate / 1000			annual change 01-05	
	2001	2002	2003	2004	2005	M'ville	Sydney	rank 2005	M'ville	Sydney
possession of cannabis	231	149	167	290	175	2.3	1.6	--	uneven	uneven
possession of other drugs	102	59	69	71	106	1.4	0.8	--	up 7%	up 4%
dealing in drug	49	44	41	34	49	0.7	0.5	--	uneven	uneven
other drug offences	31	24	74	39	26	0.3	0.3	--	up 26%	uneven
total	413	276	351	434	356	4.7	3.2		uneven	uneven
rate per 1,000 people	5	4	5	6	5	Annual trend in Marrickville rate				up 0%
rate per 1,000 people, Sydney	4	3	3	3	3	Annual trend in Sydney rate				dn 2%
rate per 1,000 people, NSW	4	3	3	3	3	Annual trend in NSW rate				dn 5%

Driving offences

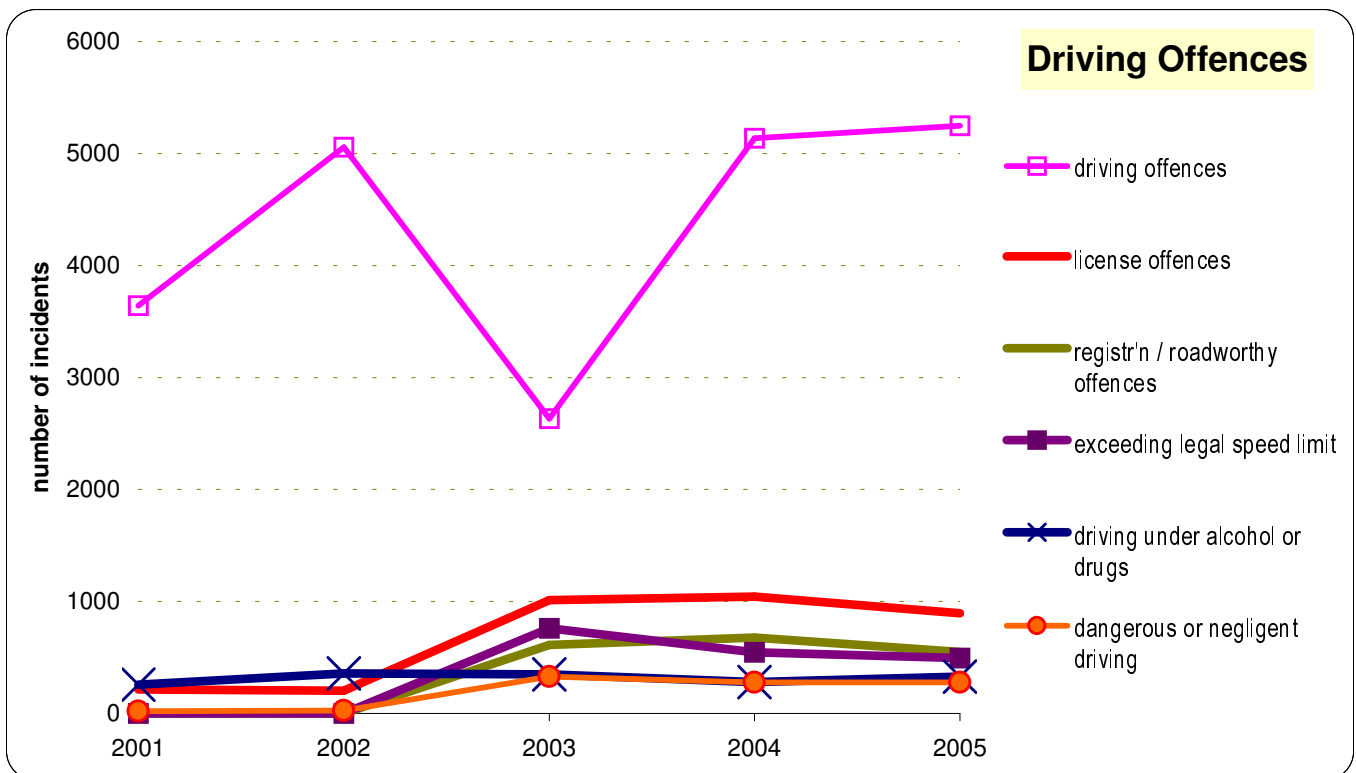
Marrickville does not rank in the top 50 LGA's in NSW for any driving offences. The rate of driving offences overall was similar to Sydney's, with only 'other driving offences' substantially higher than Sydney, at 70 per 1000 people, compared to Sydney's 58 per 1000.

Recent driving statistics are difficult to compare with pre-2003 figures because of changes to categorisation of driving offences and other changes. Since 2003, statistics record legal actions commenced by police, rather than recorded incidents. The fluctuation in 'other driving offences' shown below is partly due to this change in counting method. 'Other driving offences' here include the relatively few recorded parking offences.

Exceeding legal speed limit offences have dropped by 19% in Marrickville over 2001–2005, with a rate of 7 per 1000 people in 2005, compared to 21 per 1000 people in Sydney overall.

The driving offences that may constitute a hazard to the community are driving under the influence of alcohol or drugs, dangerous or negligent driving, and exceeding the speed limit. The number of incidents of these combined was 1100 in 2005.

With 895 offences, the rate of 'license offences' at 12 per 1000 people was lower than Sydney's 15/1000 in 2001, but higher than the rate of most of other driving offences.



Driving offences Marrickville	Recorded Incidents		Legal actions started			rate / 1000		rank 2005	annual change 01-05	
	2001	2002	2003	2004	2005	M'ville	Sydney		M'ville	Sydney
driving offences	3641	5056	2634	5136	5248	70	58	--	up 22%	up 12%
license offences	214	202	1012	1042	895	12	15	--	uneven	uneven
registr'n / roadworthy offences	0	0	612	677	550	7	9	--	uneven	dn 3%
exceeding legal speed limit	0	0	760	546	494	7	21	--	dn 19%	dn 13%
driving under alcohol or drugs	256	357	348	281	330	4	3	--	uneven	uneven
dangerous or negligent driving	19	27	330	276	276	4	4	--	uneven	up 275%
total	4130	5642	5696	7958	7793	104	109		uneven	up 11%
rate per 1,000 people	54	74	75	105	104	Annual trend in Marrickville rate			up 19%	
rate per 1,000 people, Sydney	76	79	87	110	109	Annual trend in Sydney rate			up 10%	
rate per 1,000 people, NSW	85	90	100	120	118	Annual trend in NSW rate			up 9%	